



Impact wrench 3/8" and 1/2"

This powerful impact wrench is designed for use in automobile operation, tire assembly, workshops, assembly and mechanical engineering or similar designs and provides the following features: Twin hammer impact mechanism, stable housing with ergonomic handle. low weight, therefore fatigue-free operation. Very quiet, only 83 dB(A). Adaptation of the optimum torque in 3 stages. Right and left drive operable with one hand. Exhaust through the handle downwards.

Model square drive	Compressed air connection	Order No.
3/8"	G 1/4 (steel plug DN7,2 added loosely)	741.130
1/2" compact	G 1/4 (steel plug DN7,2 added loosely)	741.160
1/2"	G 1/4 (steel plug DN7,2 added loosely)	741.180

Spare parts and accessories

Article	Description	Order No.
1/2" sockets	long, plastic coated, for aluminum wheel rims sizes 17, 19 and 21 in a plastic box	741.100

Technical data

	Nr. 741.130	Nr. 741.160	Nr. 741.180
Square drive	3/8" (10mm)	1/2" (13mm)	1/2" (13mm)
Max. free speed (U/min)	11.000	11.000	7.000
Max. torque (Nm)	583	624	1.112
Working torque range (Nm)	34-338	34-338	68-746
Max. release torque (Nm)	678	678	1.756
Average air consumption (l/min)	113	113	113
Recommended operating pressure (bar)	6,2	6,2	6,2
Weight (kg)	1,2	1,2	1,9



Small impact wrench 1/2"

The powerful small impact wrench is characterized by its very short construction shape of only 98 mm. It is particularly suitable for application at narrow places, which cannot be reached with conventional impact wrenches. Other advantages are low weight and the possibility to switch between left and right drive by thumb. Application areas: Automobile operation, workshops, mechanical engineering and tire assembly.

Square drive	Connection to compressed air	Order-No.
1/2"	G 1/4 (steel coupling plug DN 7,2 (added loosely)	741.110

Technical data

Type of drive	Twin hammer impact mechanism
Square drive	1/2" (13mm)
Max. free speed (U/min)	10.000
Max. torque (Nm)	678
Working torque range (Nm)	542
Max. release torque (Nm)	712
Average air consumption (l/min)	420
Operating pressure (bar)	6,3 (90 psi)
Weight (kg)	1,4



Hose buffer

For direct connection to beating air tools. Prevents premature wear of clutches and push nipples. Hose: PVC air hose "SOFT" LW9, flexible, oil and gasoline resistant, UV resistant. Length approx. 20cm.

Connection inlet	Connection outlet	Max. pressure (bar)	Order No.
Coupling plug DN7,2 (steel)	G 1/4 a (brass)	15	E40702



Recommendation for direct lubrication

Article	Order No.
ewo special pneumatic oil, 1 liter bottle	583
Small lubricator, connection thread G 1/4, oil mist by flowing air stream	317.10

Inline filter, inline regulator, air flow valve, swivel connector

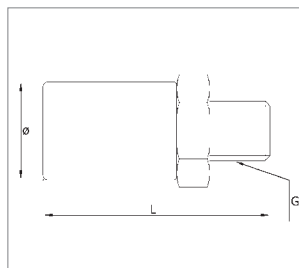
For use with pneumatic tools (e. g. impact wrenches).

Inline filter

Connection thread G	Dimensions		Order No.
	L	ø	
G 1/4	48,8	21	735.22
G 3/8	50,8	21	735.23

Technical data

Max. operating pressure (p ₁)	10bar
Filter porosity	40 µm
Material	aluminum
Weight	29g

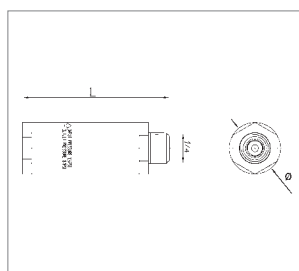


Inline pressure regulator 6bar, preset

Connection thread G 1/4	Dimensions		Order No.
	L	ø	
G 1/4	62,7	21,8	735.420

Technical data

Max. operating pressure (p ₁)	8bar
Material	aluminum
Weight	41g

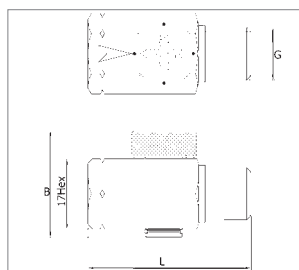


Air flow valve

Connection thread G	Dimensions		Order No.
	L	B	
G 1/4	39,7	25,9	735.020

Technical data

Max. operating pressure (p ₁)	15bar
Material	aluminum
Weight	18g



Swivel connectors

Connection thread G	Dimensions							Order No.
	A	B	C	D	E	F	H	
G 1/4	40,3	19,0	19,0	39,0	28,5	38,5	19	735.153
G 3/8	45,9	22,2	22,2	53,8	38,0	43,2	22,2	735.154

Technical data

Max. operating pressure (p ₁)	10bar
Material	aluminum
Weight	78g

