

Combined maintenance unit G ¼ – G 1

The combined maintenance unit combines filter, pressure regulator and lubricator in an extremely space-saving design in one unit.

Components: double bowl for filter condensate and oil reservoir made of plastic (polycarbonate), optionally with bowl protection or as metal bowl. Drain valves for condensate as manual drain valve, semi-automatic drain valve, automatic integrated drain valve or automatic attachable drain valve. Filter elements made of sintered bronze available with two different pore sizes. Pressure regulator part with three different control ranges for p₂. Adjustment lock by pressing the handwheel in. A version with lockable handwheel in fixed position is also available. Wall mounting with bracket set possible. Pressure gauge can be mounted on the front or rear side. Oil filling under pressure possible (use spray oil can). Available in two sizes with connection threads from G ¼ up to G 1.



423.243

Standard version: with plastic bowl and manual drain valve, with pressure gauge

Control range p ₂	Order No.					
	BG 40 (I)			BG 60 (II)		
Size	G ¼*	G ¾*	G ½	G ½*	G ¾*	G 1
0.5–6 bar	423.222	423.232	423.242	423.262	423.282	423.292
0.5–10 bar	423.223	423.233	423.243	423.263	423.283	423.293
0.5–16 bar	423.224	423.234	423.244	423.264	423.284	423.294

*inlet and outlet reduced (reductions enclosed) see page 119

Order key for all variants

423.XXXX

- plastic bowl (standard, without addition)
- M** metal bowl
- S** protective metal cage
- A** lockable, with padlock
- D** gauge with color code 0–16 bar
- additional options combination possible (except M with S)
- 2** 0.5–6 bar
- 3** 0.5–10 bar
- 4** 0.5–16 bar
- control range secondary pressure (p₂)
- 2** G ¼
- 3** G ¾
- 4** G ½
- 6** G ½
- 8** G ¾
- 9** G 1
- thread
- 2** manual drain valve, pressure gauge (p₁ 0–20 bar)
- 3** internal automatic drain valve, pressure gauge (p₁ 1.5–12 bar)
- 4** manual drain valve, without pressure gauge (p₁ 0–20 bar)
- 5** semi-automatic drain valve, pressure gauge (p₁ 0.5–20 bar)
- 6** external automatic drain valve A, pressure gauge (p₁ 4–16 bar)



423-108



423-60



423-296



423-300

Accessories

Size	Order No.					
	BG 40			BG 60		
Thread	G ¼	G ¾	G ½	G ½	G ¾	G 1
Mounting set for attaching to housing	423-60			423-102		
Protective metal cage	423-107			423-108		
Metal bowl with seal and manual drain valve	423-296			423-297		
Metal bowl with seal and semi-automatic drain valve	423-298			423-299		
Metal bowl with seal and automatic attachable drain valve A	423-300			423-301		
Lubricator attachment, made of plastic	423-179			423-179		
Lubricator attachment, metal	423-65			423-65		
Reduction G ½ × G ¾**	423-57***			–		
Reduction G ½ × G ¼**	423-58***			–		
Reduction G 1 × G ¾**	–			423-99***		
Reduction G 1 × G ½**	–			423-100***		

** also available with NPTF thread on request *** delivery only in packaging unit (PU) of 5 pieces each

Spare parts and accessories

Size	Order No.	
	BG 40	BG 60
Plastic bowl with seal and manual drain valve	423-282	423-283
Plastic bowl with seal and automatic integrated drain valve	423-288	423-289
Plastic bowl with seal and semi-automatic drain valve	423-284	423-285
Plastic bowl with seal and automatic attachable drain valve A	423-290	423-291
Pressure gauge horizontally*	Ø 50	Ø 63
Display range 0–10 bar	55	214
Display range 0–16 bar	85	215
Display range 0–25 bar	96	216
Filter element filter porosity 40 µm (integrated)	394-6	394-16
Filter element filter porosity 5 µm (reduced flow rate)	394-40	394-37
Sealing cone, complete	423-342	423-79
Diaphragm, complete	480-92	423-77

*pressure gauges starting from page 154



423-282

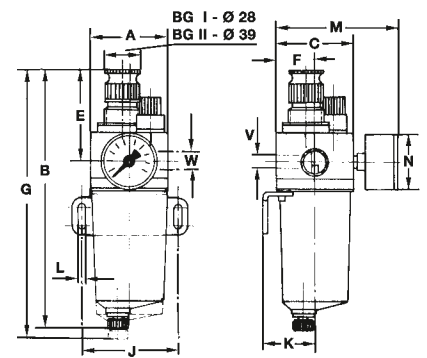


85

Technical data

Size	BG 40			BG 60		
	G ¼	G ⅜	G ½	G ½	G ¾	G 1
Thread	G ¼	G ⅜	G ½	G ½	G ¾	G 1
Nominal flow rate (l/min)**	1,520 l/min			3,700 l/min		
Max. operating pressure (p ₁) plastic bowl	16 bar (PN 16)					
Max. operating pressure (p ₁) metal bowl	25 bar (PN 25)					
Max. secondary pressure (p ₂)	6, 10 or 16 bar					
Operating temperature plastic bowl	0 °C up to +50 °C					
Operating temperature metal bowl	0 °C up to +90 °C					
Usable bowl capacity filters	25 cm ³			75 cm ³		
Usable bowl capacity lubricators	75 cm ³			150 cm ³		
Mounting position/flow direction	vertically/in arrow direction					
Nominal width	DN 8			DN 15		
Pre-pressure dependence	< 3 %			< 2 %		
Reverse control hysteresis	~ 1 bar					
Weight	1.255 kg			2.69 kg		
Material seals	NBR					
Material housing	zinc die-cast					
Material filter element	sintered bronze					
Material plastic bowl	polycarbonate					

** measured at 10 bar pre-pressure (p₁), 6 bar secondary pressure (p₂) and pressure drop Δp = 1 bar acc. to ISO 6953



Dimensions (mm)

	BG 40			BG 60		
	G ¼	G ⅜	G ½	G ½	G ¾	G 1
W	G ¼	G ⅜	G ½	G ½	G ¾	G 1
A	66			93		
B***	200			295		
C	69			96		
E	65			105		
F	34.5			48		
G***	220			325		
J	82			112		
K	43			61		
L	6.5			9		
M	105			135		

***with automatic integrated drain valve: +10 mm, with automatic attachable drain valve A: +90 mm