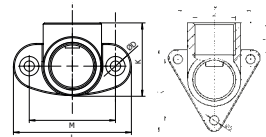


Threaded fittings – ceiling elbows, distributors, air distributors

Brass fittings, PA plastic combined with brass distributor blocks.

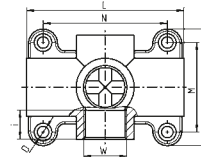
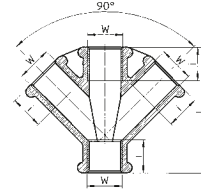
Ceiling elbows 90° (for wall mounting) female threaded

Thread	Dimensions (mm)						Order No.
W	L	M	N	K	i	D	
2 × G ¾	35	30	26	18.5	11	4.5	121-55
2 × G ½	52	38	–	35	–	4.5	121-56
2 × G ¾	51	45	39	28	13	4.5	121-57



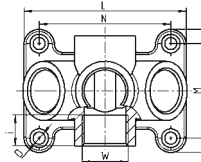
Distributors with three and four connections and female thread

Thread	Dimensions (mm)						Order No.
W	L	M	N	K	i	D	
3 × G ¼ nickel-plated	32	–	–	–	11	–	121-30
3 × G ¾	47	–	–	–	14	–	121-35
3 × G ½	54	–	–	–	15	–	121-50
4 × G ¾	61	–	–	–	14	–	121-34
4 × G ½	67	–	–	–	18	–	121-54



Distributors with five connections (G ½) and female thread

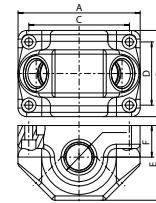
Thread	Dimensions (mm)						Order No.
W	L	M	N	K	i	D	
5 × G ½	74	43.5	59	57	15	5.5	121-58
5 × G ½	74	43.5	59	57	15	5.5	121-59



Distributor block with female thread

Material: glass-fibre reinforced plastic PA 6 with brass sleeves.
Operating pressure up to 16 bar/232 psi.

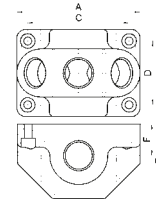
Thread	Dimensions (mm)						Order No.
Input/Outputs	A	B	C	D	E	F	
G ½ + 2 × G ½	85	60	70	44	52	22	121-70
G ½ + 3 × G ½	85	60	70	44	52	22	121-71



Distributor block with two or three brass couplings DN 7.2 and one coupling plug

Material: glass-fibre reinforced plastic PA 6 with brass sleeves.
Operating pressure up to 16 bar/232 psi.

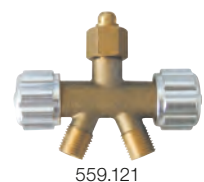
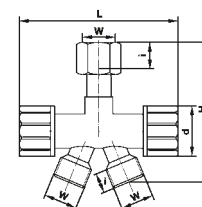
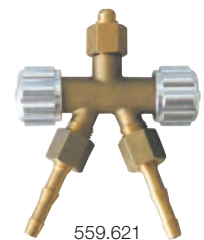
Outputs	Dimensions (mm)						Order No.
	A	B	C	D	E	F	
2 couplings	85	60	70	44	52	22	121-72
3 couplings	85	60	70	44	52	22	121-73



Air distributor

Air distributors enable the installation of two different shut-off valves at one tapping point. Withdrawal options. They are made of hot-pressed brass with two outlets and two shut-off valves (see also X- and Y-Distributors, page 109). With metal handwheel and two angled outlets. Material: hot-pressed brass.

Thread W	DN	Dimensions (mm)				Order No.
		L	i	d	SW(AF)	
With nozzle						
G ¼	6	79	9	110	25	559.621
G ¾	6	79	9	110	25	559.631
Without nozzle						
G ¼	6	79	9	65	25	559.121
G ¾	6	79	9	65	25	559.131

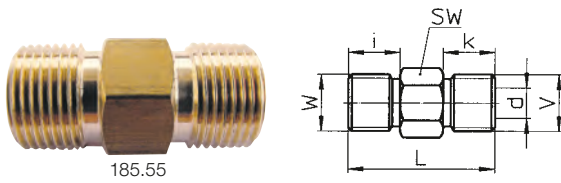


Technical data

Max. operating pressure (p ₁)	40 bar (PN 40)/580 psi
Operating temperature	-10 °C up to +90 °C
Mounting position	any

Threaded fittings – double nipple

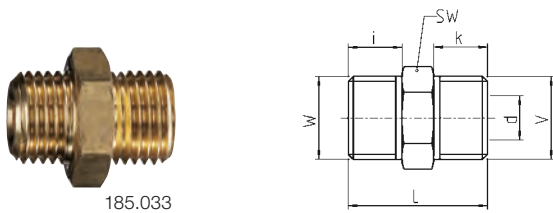
For connecting devices in compressed air preparation and welding technology or similar. Some of the threaded fittings are provided with a cone (EN 560) for the connection of hose connectors with a ball nipple sealing.



Male thread, long – with cone 45° (EN 560)

Thread W × V	Dimensions (mm)					Order No.
	L	i	k	d	SW (AF)	
G 1/8 × G 1/8	29	9.5	9.5	5	12	185.29
G 1/4 × G 1/8	32	12	9.5	5	14	185.30
G 1/4 × G 1/4	34	12	12	7	14	185.33
G 3/8 × G 1/4	36	13.5	12	7	17	185.53
G 1/4 × G 1/2	38	12	15.5	7	22	185.54
G 3/8 × G 3/8	37	13.5	13.5	10	17	185.55
G 1/2 × G 3/8	40	15.5	13.5	10	22	185.75
G 1/2 × G 1/2	44	15.5	15.5	12	22	185.77
G 1/2 × G 3/4	43	15.5	17	12	27	185.78
G 3/4 × G 3/4*	42	15	15	19	30	415-13**
G 3/4 × G 1	50	15	16	19	36	415-15**
G 1 × G 1*	55	16	16	22	36	415-14**

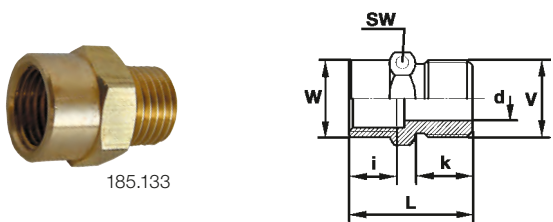
*without cone **order no. 415-13 (p₁=40 bar), 415-14 (p₁=50 bar), 415-15 (p₁=20 bar) [order also possible as a single item]



Male thread, short – with cone 45° (EN 560)

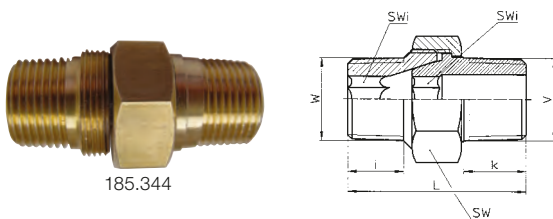
Thread W × V	Dimensions (mm)					Order No.
	L	i	k	d	SW (AF)	
G 1/8 × G 1/8	19	7	7	5	12	185.029
G 1/8 × G 1/4	20.5	7	8.5	5	14	185.030
G 1/4 × G 1/4	22	8.5	8.5	7	14	185.033
G 1/4 × G 3/8	24	8.5	9.5	7	17	185.053
G 1/4 × G 1/2	25.5	8.5	11	7	22	185.054
G 3/8 × G 3/8	25	9.5	9.5	10	17	185.055
G 3/8 × G 1/2	26.5	9.5	11	10	22	185.075
G 1/2 × G 1/2	28	11	11	12	22	185.077
G 1/2 × G 3/4	33	11	14	12	30	185.078
G 3/4 × G 3/4	36	14	14	16	30	185.013
G 3/4 × G 1	40	14	16	16	36	185.015
G 1 × G 1	42	16	16	22	36	185.014
G 1 1/2 × G 1 1/2	50	20	20	36	50	280-228
G 2 × G 2	55	20	20	40	65	454-9***

***order also possible as a single item



Female and male thread

Thread W × V	Dimensions (mm)					Order No.
	L	i	k	d	SW (AF)	
G 1/8 × G 1/8	20	8	8	5	14	185.129
G 1/4 × G 1/4	24	10	10	8	17	185.133
G 3/8 × G 3/8	29	11	12	10	22	185.155
G 1/2 × G 1/2	30	12	12	15	26	185.177
G 1/8 × G 1/4	22	8	10	8	14	185.130
G 1/4 × G 1/8	22	10	8	5	17	185.131
G 1/4 × G 1/2	27	10	12	10	22	185.132
G 3/8 × G 1/4	27	11	10	8	22	185.153
G 3/8 × G 1/2	29	11	12	13	22	185.154
G 1/2 × G 3/8	30	12	12	10	26	185.175
G 1/2 × G 3/4	34	12	16	17	32	185.176
G 3/4 × G 1/2	37	15	16	15	32	185.178



Male thread, detachable (three-part), with conical thread

Thread W × V	Dimensions (mm)					Order No.
	L	i	k	SWi (AFf)	SW (AF)	
R 1/8 × R 1/8	27	9	9	5	15	185.311
R 1/8 × R 1/4	30	9	12	5	15	185.312
R 1/4 × R 1/4	34	12	12	6	19	185.322
R 1/4 × R 3/8	35	12	13	6	19	185.324
R 3/8 × R 3/8	36	13	13	8	22	185.344
R 1/2 × R 1/2	44	16	16	12	27	185.366
R 3/4 × R 3/4	52	18	18	14	36	185.388
R 1 × R 1	65	22	22	19	46	185.399

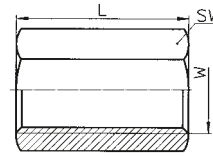
maximum operating pressure 16 bar / 232 psi



Threaded fittings – blind plugs, reductions etc.

Sleeves (2-way) with female thread

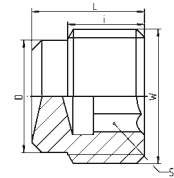
Thread	Dimensions (mm)			Order No.
	W	L	SW (AF)	
G 1/8	22		14	185.110
G 1/4	26		17	185.111
G 3/8	26		22	185.112
G 1/2	30		27	185.113
G 3/4	33		32	185.114
G 1	35		40	185.115



185.112

Screw plugs with male thread

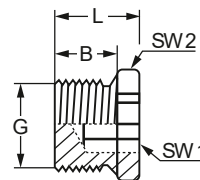
Thread	Dimensions (mm)				Order No.
	W	L	i	D	
G 1/8	8		5	8	323-14
G 1/4	11		7	11	280-127
G 3/8	10		8	14	447-28
G 1/2	12		8	18	424-67



280-127

Blind plugs with male thread, external and internal hexagon and with machined sealing surface for sealing ring DIN 7603.

Thread	Dimensions (mm)				Order No.
	G	L	B	SW1 (AF1) / SW2 (AF2)	
G 1/8	10	6.5	5	14	185.160
G 1/4	13	8.5	8	17	185.161
G 3/8	15	10.5	10	19	185.162
G 1/2	19	13.5	12	24	185.163
G 3/4	20	14	14	32	185.164
G 1	22	16	17	36	185.165

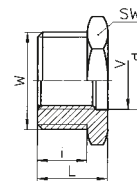


185.161

Reduction with a female and male thread, external hexagon to reduce female threads or expand male threads.

Thread	Dimensions (mm)				Order No.
	W x V	L	i	D	
G 1/4 x G 1/8	12	9	10	17	1117
G 3/8 x G 1/8	12	8.5	10	19	322-18*
G 3/8 x G 1/4	12	8.5	13.5	19	1068
G 1/2 x G 1/4	15.5	11.5	13.5	22	1191
G 1/2 x G 3/8	15.5	11.5	17	22	1018
G 3/4 x G 1/2	18	12	21	32	1292
G 1 x G 3/4	18	12	27	36	1193
G 1 1/2 x G 1 1/4	21	15	42.5	50	409-81
G 2 x G 1 1/4	30	20	43	65	417-50*
G 2 x G 1 1/2	30	20	49	65	417-45*

* order also possible as a single item



1068

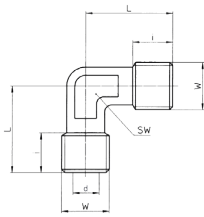
Technical data

Max. operating pressure (p ₁)	16 bar (PN 16)/232 psi
Operating temperature	-10 °C up to +90 °C
Mounting position/flow direction	any/any
Material	brass

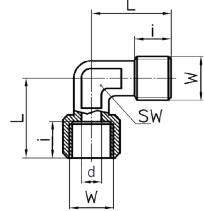
Threaded fittings – elbow 90°, T-pieces



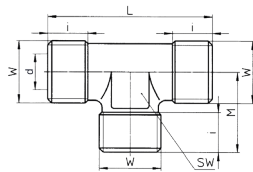
185.83



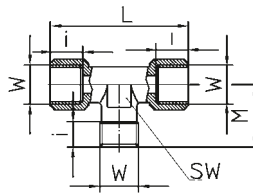
185.43



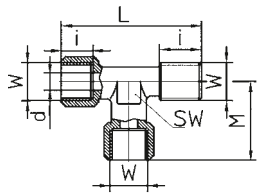
185.96



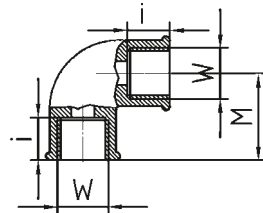
185.63



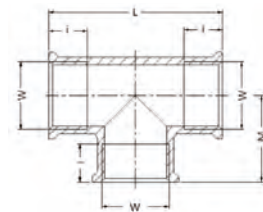
185.13



185.185



185.195



Elbow 90°

Thread	Dimensions (mm)					Order No.
	W	d	L	M	i	
Male thread						
R 1/8	5	18	–	10	10	185.82
R 1/4	7	22	–	11	13	185.83
R 3/8	10	27	–	12	17	185.85
R 1/2	12	26	–	13	21	185.87
R 3/4	19	40	–	16	25	185.88
R 1	25	45	–	18	30	185.89

Female/male thread						
G/R 1/8	6	21	–	8	10	185.42
G/R 1/4	8	25.5	–	11	13	185.43
G/R 3/8	11	28	–	11.5	17	185.45
G/R 1/2	15	33.5	–	14	21	185.47
G/R 3/4	19	36.5	–	16.5	–	185.48
G/R 1	24	45	–	19	–	185.49

T-piece

Male thread						
R 1/8	5	35	17	7	10	185.97
R 1/4	8	47	24	12	13	185.96
R 3/8	9	52	26	12	17	185.95
R 1/2	12	54	27	13	21	185.94
R 3/4	19	80	38	19	–	185.93
R 1	25	90	42	20	–	185.92

Female/male/female thread						
G 1/8	6	42	18.5	8	10	185.62
G 1/4	8	51	23.5	11	13	185.63
G 3/8	11	56	26	11.5	17	185.65
G 1/2	15	67	31	14	21	185.67
G 3/4	19	73	33	16.5	25	185.68
G 1	24	90	39	19	30	185.69

Female/female/male thread						
G/R 1/8	6	39.5	21	8	10	185.12
G/R 1/4	8	49	23.5	11	13	185.13
G/R 3/8	11	54	28	11.5	17	185.15
G/R 1/2	15	64.5	33.5	14	21	185.17
G/R 3/4	19	69.5	36.5	16.5	25	185.18
G/R 1	24	84	45	19	33	185.19

Elbow 90°, female thread

Thread	Dimensions (mm)				Order No.	
	W	d	L	M		
2×G 1/8	6	–	–	17	8	185.182
2×G 1/4	8	–	–	17	10	185.183
2×G 3/8	15	–	–	23	11	185.185
2×G 1/2	19	–	–	26	15	185.187
2×G 3/4	25	–	–	33	16	185.188
2×G 1	30	–	–	40.5	20	185.189

T-piece, female thread

3×G 1/8	8	36	18	9	185.197
3×G 1/4	11	36	19	10	185.196
3×G 3/8	15	44	23	12	185.195
3×G 1/2	19	59	29.5	17	185.194
3×G 3/4	25	59	34	15	185.193
3×G 1	30	78	39	20	185.192

maximum operating pressure: 25 bar (PN 25)/363 psi

Technical data

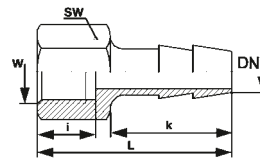
Max. operating pressure (p ₁)	63 bar (PN 63)/914 psi
Operating temperature	-10 °C up to +90 °C
Mounting position/flow direction	any/any
Material	brass



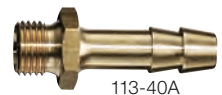
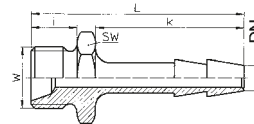
Hose connectors

Threaded hose connection, one-piece

Thread	Hose	Dimensions (mm)			Order No.
W	DN	L	i/K	SW(AF)	
Female thread (DIN 3852-2)					
G 1/8	4	33	9/22	12	113-9
G 1/8	6	36	9/25	12	113-10
G 1/8	9	36	9/25	14	113-11
G 1/4	4	36	12/22	17	113-12
G 1/4	6	40	12/25	17	113-13
G 1/4	9	40	12/25	17	113-14
G 1/4	13	45	12/30	17	113-15
G 3/8	6	42	14/25	19	113-16
G 3/8	9	42	14/25	19	113-17
G 3/8	13	47	14/30	19	113-18
G 1/2	6	42	14/25	24	113-19
G 1/2	9	42	14/25	24	113-20
G 1/2	13	47	14/30	24	113-21
G 3/4	9	47	19/25	32	113-22
G 3/4	13	52	19/30	32	113-23
G 3/4	19	58	19/36	32	113-24
G 1	19	60	20/36	36	113-31
G 1	25	66	20/42	36	113-32
G 1	32	70	20/46	36	113-33

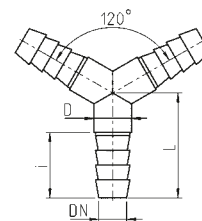


Male thread and inner cone 45° (DIN 3852-2)					
G 1/8	4	34	8/22	14	113-41
G 1/8	6	37	8/25	14	113-51
G 1/8	9	37	8/25	14	113-52
G 1/4	4	36	10/22	17	113-68
G 1/4	6	40	10/25	17	113-31A
G 1/4	9	40	10/25	17	113-40A
G 1/4	13	45	10/30	17	113-71
G 3/8	6	43	12/25	17	113-32A
G 3/8	9	43	12/25	17	113-34A
G 3/8	13	48	12/30	19	113-43
G 1/2	6	44	12/25	24	113-67
G 1/2	9	44	12/25	24	113-66
G 1/2	13	49	12/30	24	113-44
G 3/4	9	49	14/25	32	113-25
G 3/4	13	54	14/30	32	113-26
G 3/4	19	58	14/36	32	113-27
G 3/4	25	53	12.5/35	30	113-34
G 1	19	60	16/36	36	113-28
G 1	25	66	16/42	36	113-29
G 1	32	70	16/46	36	113-30



Two-way distributor

Hose	Dimensions (mm)			Order No.
DN	L	i	D	
9	32	20	11.5	113.30



Hose connector / double hose nozzle

According to EN ISO 560 (DIN 8542)

Hose 1	Hose 2	Dimensions (mm)		Order No.
DN 1	DN 2	L	i	
4	4	64	29.5	113.00
6	6	72	33.5	113.01
6	8	72	33.5	113.02
9	9	72	33.5	113.03
13	13	72	33.5	113.04

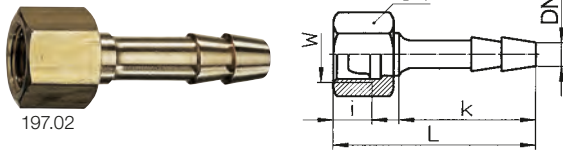


Technical data

Max. operating pressure (p ₁)	40 bar (PN 40) / 580 psi
Operating temperature	-10 °C up to +90 °C
Mounting position / flow direction	any / any
Material	brass

Hose connections, detachable

Detachable hose connections, two-pieces, are composed of a hose nozzle to slide the hose onto and a hexagon union nut for the threaded part. Hose nozzle with ball seal.

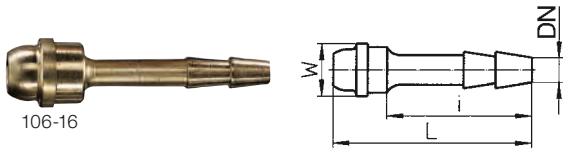


Detachable hose connection, two-pieces

Hose nozzle with ball seal and union nut with hexagon.

Thread	Hose DN	Dimensions (mm)			Order No.
		L	i/K	SW(AF)	
G 1/8	4	43	9/25	12	197.06
G 1/8	6	43	9/25	12	197.07
G 1/4	4	43	9/28	17	197.01
G 1/4	6	43	9/25	17	197.02
G 1/4	9	43	9/29	17	197.03
G 3/8	4	49	9/31	19	198.01
G 3/8	6	43	9/25	19	198.02
G 3/8	9	43	9/28	19	198.03
G 3/8*	13	43	9/28	19	198.04
G 1/2	6	43	9/25	24	199.02
G 1/2	9	43	9/29	24	199.03
G 1/2	13	47	9/31	24	199.04

* union nut not removable

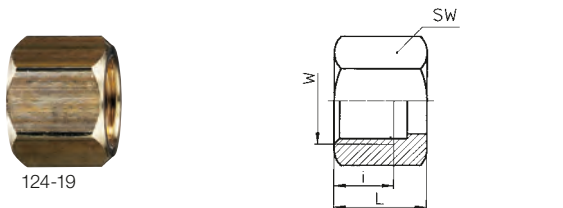


Individual parts for detachable hose connections

Thread	Hose DN	Dimensions (mm)			Order No.
		L	i	SW(AF)	
Hose nozzle with ball seal					
G 1/8	4	25	15	–	295-5
G 1/8	6	25	15	–	295-6
G 1/4	4	43.5	28	–	113-49
G 1/4	6	37	25	–	106-16
G 1/4	9	37	25	–	113-50
G 3/8	4	47.5	31	–	120-10a
G 3/8	6	39	25	–	113-38
G 3/8	9	39	25	–	113-39
G 1/2	6	41	25	–	113-47
G 1/2	9	41	25	–	113-48
G 1/2	13	45	36	–	113-45

Union nut with hexagon

G 1/8	–	10	8	12	295-7
G 1/4	–	14	11	17	124-19
G 3/8	–	16	13	19	120-9
G 3/8 LH	–	16	13	19	124-18
G 1/2	–	18	13	24	147-12

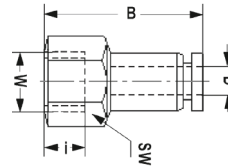
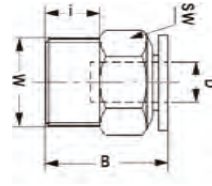


Push-in fittings, push-in connectors

Push-in connector series made of plastic, nickel-plated brass and zinc alloy. The quick connectors can be used in conjunction with plastic hoses (PU or PA).

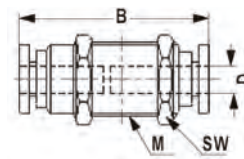
Push-in fitting

Thread	Hose-Ø		Dimensions (mm)			Order No.
	D	B	i	SW(AF)		
Male thread						
G 1/8	4	19	6	10	582.1104	
G 1/8	6	21	6	14	582.1106	
G 1/8	8	26	6	14	582.1108	
G 1/4	4	18	8	14	582.1204	
G 1/4	6	23	8	14	582.1206	
G 1/4	8	25	8	14	582.1208	
G 1/4	10	31	8	17	582.1210	
G 1/4	12	34	8	21	582.1212	
G 3/8	6	21	9	17	582.1306	
G 3/8	8	22	9	17	582.1308	
G 3/8	10	28	9	17	582.1310	
G 3/8	12	28	8	21	582.1312	
G 1/2	6	25	11	21	582.1406	
G 1/2	8	26	11	21	582.1408	
G 1/2	10	26	11	21	582.1410	
G 1/2	12	33	11	21	582.1412	
Female thread						
G 1/8	4	23	8	10	582.2104	
G 1/8	6	24	8	12	582.2106	
G 1/8	8	26	8	14	582.2108	
G 1/4	4	26	11	14	582.2204	
G 1/4	6	27	11	14	582.2206	
G 1/4	8	29	11	14	582.2208	
G 1/4	10	32	11	17	582.2210	
G 1/4	12	34	11	21	582.2212	
G 3/8	6	28	12	17	582.2306	
G 3/8	8	30	12	17	582.2308	
G 3/8	10	33	12	17	582.2310	
G 3/8	12	35	12	21	582.2312	
G 1/2	6	30	14	21	582.2406	
G 1/2	8	32	14	21	582.2408	
G 1/2	10	35	14	21	582.2410	
G 1/2	12	37	14	21	582.2412	



Push-in bulkhead fitting

Thread	Hose-Ø		Dimensions (mm)		Order No.
	D	B	SW (AF)		
M12	4	30	14		582.9304
M14	6	32	17		582.9306
M16	8	35	19		582.9308
M20	10	42	24		582.9310
M22	12	45	27		582.9312



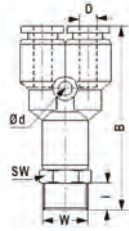
Technical data

Application area	compressed air, vacuum and neutral gases
Max. operating pressure (p ₁)	10 bar / 145 psi
Recommended hose*	PU or PA (Nylon)
Operating temperature	-10 °C up to +80 °C
Seal	NBR
Thread	cylindrical with embedded O-ring
Materials	plastic, nickel-plated brass, zinc alloyed

* see page 127



582.6104

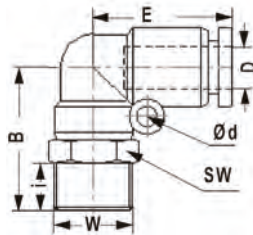


Y-Push-in fitting, male thread

Thread	Hose-Ø	Dimensions (mm)				SW(AF)	Order No.
		W	D	i	B		
G 1/8	4	6	42	3	10	582.6104	
G 1/8	6	6	44	3	12	582.6106	
G 1/8	8	6	47	3	14	582.6108	
G 1/4	4	8	45	3	14	582.6204	
G 1/4	6	8	46	3	14	582.6206	
G 1/4	8	8	49	3	14	582.6208	
G 1/4	10	8	58	4	17	582.6210	
G 3/8	6	9	48	3	17	582.6306	
G 3/8	8	9	51	3	17	582.6308	
G 3/8	10	9	59	4	17	582.6310	
G 1/2	6	11	51	3	21	582.6406	
G 1/2	8	11	54	3	21	582.6408	
G 1/2	10	11	63	4	21	582.6410	



582.3206

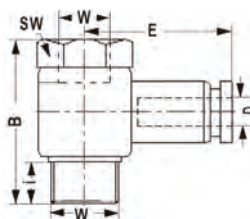


L-Push-in fitting, male thread

Thread	Hose-Ø	Dimensions (mm)					SW(AF)	Order No.
		W	D	i	B	E		
G 1/8	4	6	24	17	—	10	582.3104	
G 1/8	6	6	26	19	3	12	582.3106	
G 1/8	8	6	30	23	3	14	582.3108	
G 1/4	4	8	27	18	—	14	582.3204	
G 1/4	6	8	28	19	3	14	582.3206	
G 1/4	8	8	32	23	3	14	582.3208	
G 1/4	10	8	36	28	4	17	582.3210	
G 1/4	12	8	39	30	4	21	582.3212	
G 3/8	6	9	30	19	3	17	582.3306	
G 3/8	8	9	33	23	3	17	582.3308	
G 3/8	10	9	37	28	4	17	582.3310	
G 3/8	12	9	40	30	4	21	582.3312	
G 1/2	6	11	33	19	3	21	582.3406	
G 1/2	8	11	37	23	3	21	582.3408	
G 1/2	10	11	41	28	4	21	582.3410	
G 1/2	12	11	43	30	4	21	582.3412	



582.7206

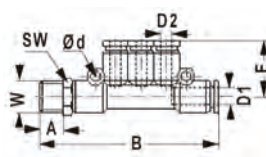


T-Push-in fitting, male/female thread, rotatable

Thread	Hose-Ø	Dimensions (mm)				SW(AF)	Order No.
		W	D	i	B		
G 1/8	4	6	24	22	10	582.7104	
G 1/8	6	6	24	23	10	582.7106	
G 1/8	8	6	24	26	10	582.7108	
G 1/4	6	8	26	25	14	582.7206	
G 1/4	8	8	26	29	14	582.7208	
G 1/4	10	8	26	32	14	582.7210	
G 3/8	6	8	32	27	19	582.7306	
G 3/8	8	8	32	30	19	582.7308	
G 3/8	10	8	32	33	14	582.7310	
G 3/8	12	8	32	36	14	582.7312	
G 1/2	8	11	39	33	24	582.7408	
G 1/2	10	11	39	36	19	582.7410	
G 1/2	12	11	39	37	19	582.7412	



582.9851



T-Multipoint distributor, male thread, with three reduced outlets

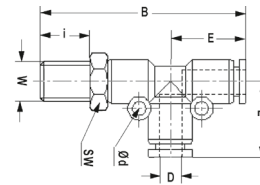
Thread	Hose-Ø		Dimensions (mm)					SW(AF)	Order No.
	1xD1	3xD2	A	B	E	Ød			
G 1/8	6	4	6	68	19	3	12	582.9851	
G 1/4	8	4	8	71	20	2	14	582.9852	
G 1/4	8	6	8	71	20	2	14	582.9853	
G 3/8	10	8	9	92	24	4	17	582.9854	

T-Push-in fitting, male thread

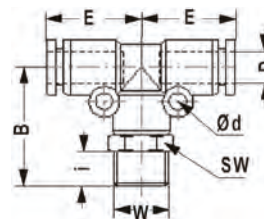
Thread	Hose-Ø		Dimensions (mm)				Order No.
	W	D	i	B	E	Ød	
Male thread lateral							
G 1/8	4	6	25	19	3	10	582.4104
G 1/8	6	6	26	19	3	12	582.4106
G 1/8	8	6	29	23	3	14	582.4108
G 1/4	4	8	28	19	3	14	582.4204
G 1/4	6	8	28	19	3	14	582.4206
G 1/4	8	8	31	23	3	14	582.4208
G 1/4	10	8	37	28	4	17	582.4210
G 1/4	12	8	39	30	4	21	582.4212
G 3/8	6	9	30	19	3	17	582.4306
G 3/8	8	9	33	23	3	17	582.4308
G 3/8	10	9	38	28	4	17	582.4310
G 3/8	12	9	39	30	4	21	582.4312
G 1/2	6	11	34	19	3	21	582.4406
G 1/2	8	11	36	23	3	21	582.4408
G 1/2	10	11	41	28	4	21	582.4410
G 1/2	12	11	42	30	4	21	582.4412

Male thread bottom

G 1/8	4	6	25	18	3	10	582.5104
G 1/8	6	6	26	19	3	12	582.5106
G 1/8	8	6	29	23	3	14	582.5108
G 1/4	4	8	28	18	3	14	582.5204
G 1/4	6	8	29	19	3	14	582.5206
G 1/4	8	8	31	23	3	14	582.5208
G 1/4	10	8	37	28	4	17	582.5210
G 1/4	12	8	38	30	4	21	582.5212
G 3/8	6	9	30	19	3	17	582.5306
G 3/8	8	9	33	23	3	17	582.5308
G 3/8	10	9	38	28	4	17	582.5310
G 3/8	12	9	40	30	4	21	582.5312
G 1/2	6	11	34	19	3	21	582.5406
G 1/2	8	11	36	23	3	21	582.5408
G 1/2	10	11	41	28	4	21	582.5410
G 1/2	12	11	42	30	4	21	582.5412



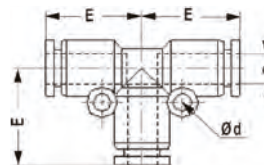
582.4206



582.5206

T-Push-in fitting, standard version

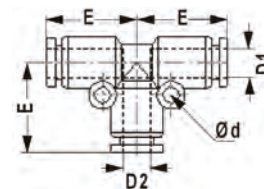
Hose-Ø	Dimensions (mm)		Order No.
	D	Ød	
4	18	3	582.9204
6	19	3	582.9206
8	23	3	582.9208
10	28	4	582.9210
12	30	4	582.9212



582.9204

T-Push-in fitting, reduced

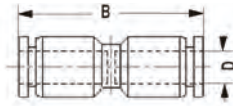
Hose-Ø	Dimensions (mm)		Order No.
	2x D1	D2	
6	4	19	582.9811
8	6	23	582.9812
10	8	28	582.9813
12	10	30	582.9814



582.9811



582.9004

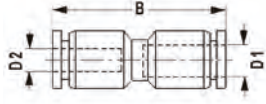


Straight push-in connector, standard version

Hose-Ø		Dimensions (mm)		Order No.
D	B	B	D	
4		33		582.9004
6		35		582.9006
8		39		582.9008
10		48		582.9010
12		49		582.9012



582.9801

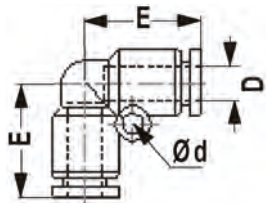


Straight push-in connector, reduced

Hose-Ø		Dimensions (mm)		Order No.
D1	D2	B	D	
6	4	35		582.9801
8	6	39		582.9802
10	8	47		582.9803
12	10	49		582.9804



582.9104

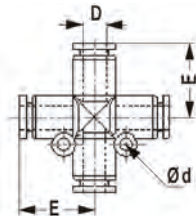


L-Push-in connector

Hose-Ø		Dimensions (mm)		Order No.
D	E	E	Ød	
4		18	-	582.9104
6		19	3	582.9106
8		23	3	582.9108
10		28	4	582.9110
12		30	4	582.9112



582.9404

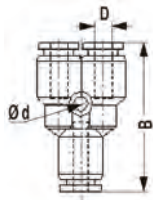


X-Push-in connector

Hose-Ø		Dimensions (mm)		Order No.
D	E	E	Ød	
4		18	3	582.9404
6		19	3	582.9406
8		23	3	582.9408
10		28	4	582.9410
12		30	4	582.9412



582.9504

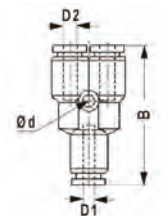


Y-Push-in connector, standard version

Hose-Ø		Dimensions (mm)		Order No.
D	B	B	Ød	
4		36	3	582.9504
6		37	3	582.9506
8		40	3	582.9508
10		50	4	582.9510
12		53	4	582.9512



582.9821

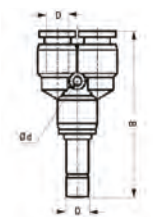


Y-Push-in connector, reduced

Hose-Ø		Dimensions (mm)		Order No.
D1	2x D2	B	Ød	
6	4	37	3	582.9821
8	6	40	3	582.9822
10	8	49	3	582.9823
12	10	53	4	582.9824



582.9604

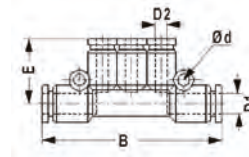


Y-Push-in connector, with plug

Hose-Ø		Dimensions (mm)		Order No.
D (2+1)	B	B	Ød	
4		51	3	582.9604
6		55	3	582.9606
8		60	3	582.9608
10		73	4	582.9610
12		78	4	582.9612

T-Multipoint distributor, with three reduced outlets

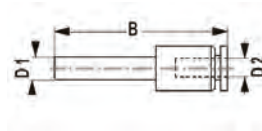
Hose-Ø		Dimensions (mm)			Order No.
2× D1	3× D2	B	E	Ød	
6	4	58	19	3	582.9841
8	4	63	20	3	582.9842
8	6	63	20	3	582.9843
10	6	77	24	4	582.9844
10	8	77	24	4	582.9845



582.9841

Push-in connector with sleeve, reduced

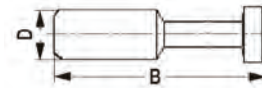
Hose-Ø		Dimensions (mm)		Order No.
D1	D2	B		
6	4	42		582.9831
8	4	44		582.9832
8	6	45		582.9833
10	6	47		582.9834
10	8	47		582.9835
12	6	54		582.9836
12	8	54		582.9837
12	10	55		582.9838



582.9831

Locking plug

Hose-Ø	Dimensions (mm)	Order No.
D	B	
4	28	582.9861
6	33	582.9862
8	37	582.9863
10	42	582.9864
12	44	582.9865



582.9861

Technical data

Application area	compressed air, vacuum and neutral gases
Max. operating pressure (p ₁)	10 bar / 145 psi
Recommended hose	PU or PA (Nylon)
Operating temperature	-10 °C up to +80 °C
Seal	NBR
Thread	cylindrical with embedded O-ring
Materials	plastic, nickel-plated brass, zinc alloyed

Plastic hose for push-in connectors polyurethane (PU)

Polyurethane hoses are very flexible and due to their high tensile strength very resistant. They have good resilience and can be used with small radius in narrow places. They are very resistant to abrasion. Good resistance to mineral oil, grease, oxygen, ozone and aliphatic hydrocarbons. Good UV and weather resistance. They have high softening temperatures, slow heat aging and very good cold flexibility. Good environmental compatibility. The ideal choice for fluid power applications in combination with push-in connectors.

Full roll, 50 m

Hose-Ø D × d (mm)	Max. operating pressure p ₁ (bar / psi)	Length (m)	Order No.
4 × 2.5	11 / 159	50	582.004
6 × 4	11 / 159	50	582.006
8 × 5.5	11 / 159	50	582.008
10 × 6.5	11 / 159	50	582.010
12 × 8	11 / 159	50	582.012



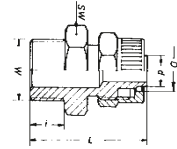
582.004

Quick screw fittings for plastic hoses

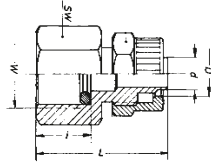
For quick connection of plastic hoses with connection threads. The hose is pushed onto the corresponding nozzle and clamped with the union nut. The union nut has a knurl for quick tightening and a hexagon for end fastening. Suitable for hoses with an inner diameters of 4, 6 or 8 mm. Thread sizes G 1/8, G 1/4 and G 3/8. Material: nickel-plated brass.



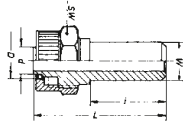
401.122



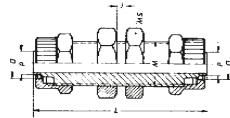
401.222



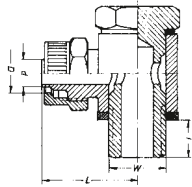
401.302



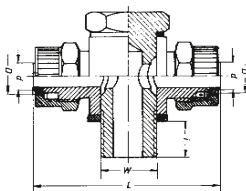
401.402



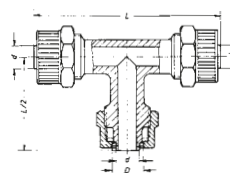
401.522



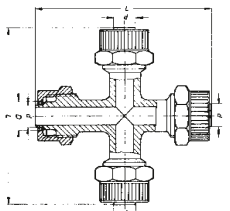
401.622



401.702



401.802



GEV – Straight male screw-in fitting

Thread W	Hose-Ø D × d (mm)	Dimensions (mm)			Order No.
		L	i	SW (AF)	
G 1/8	6 × 4	25	6	15	401.112
G 1/8	8 × 6	25	6	15	401.113
G 1/4	6 × 4	27	8	18	401.122
G 1/4	8 × 6	27	8	18	401.123
G 1/4	10 × 8	29	8	18	401.124
G 3/8	8 × 6	29	9	21	401.133
G 3/8	10 × 8	31	3	21	401.134

GAV – Straight female screw-on fitting

Thread W	Hose-Ø D × d (mm)	Dimensions (mm)			Order No.
		L	i	SW (AF)	
G 1/4	6 × 4	28	8	17	401.222
G 1/4	8 × 6	28	8	17	401.223

GLV – Straight soldering union (brass bright)

Blowpipe W	Hose-Ø D × d (mm)	Dimensions (mm)			Order No.
		L	i	SW (AF)	
Ø6	6 × 4	28	15	12	401.302
Ø9	8 × 6	31	18	14	401.303

GSV – Straight bulkhead fitting

Thread W	Hose-Ø D × d (mm)	Dimensions (mm)			Order No.
		L	i	SW (AF)	
M10 × 1	6 × 4	47	11	14	401.402
M12 × 1	8 × 6	48	13	16	401.403

WEV – Swivel elbow screw-in fitting

Thread W	Hose-Ø D × d (mm)	Dimensions (mm)		Order No.
		L	i	
G 1/8	6 × 4	25	9	401.512
G 1/8	8 × 6	25	9	401.513
G 1/4	6 × 4	25	11	401.522
G 1/4	8 × 6	25	11	401.523
G 1/4	10 × 8	30	11	401.524

TEV – Swivel T-Screw fitting

Thread W	Hose-Ø D × d (mm)	Dimensions (mm)		Order No.
		L	i	
G 1/8	6 × 4	48	6	401.612
G 1/8	8 × 6	48	6	401.613
G 1/4	6 × 4	53	8	401.622
G 1/4	8 × 6	52	8	401.623
G 1/4	10 × 8	55	8	401.624

TV – T-Distributor

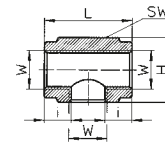
Hose-Ø D × d (mm)	Dimensions (mm)		Order No.
	L		
6 × 4	44		401.702
8 × 6	44		401.703

KV – Cross-distributor

Hose-Ø D × d (mm)	Dimensions (mm)		Order No.
	L		
6 × 4	42		401.802
8 × 6	45		401.803

T-Distributor

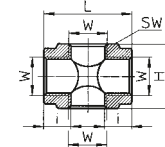
Thread	Dimensions (mm)				Order No.
	W	L	H	i	
G 1/8	23	-	6	17	401-39
G 1/4	30	22	8	22	401-40



401-40

Cross-distributor

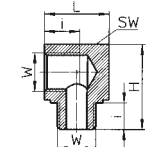
Thread	Dimensions (mm)				Order No.
	W	L	H	i	
G 1/8	23	23	6	17	401-41
G 1/4	30	22	8	22	401-42



401-42

Screw-in distributor L

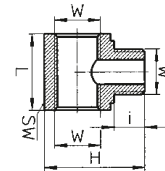
Thread	Dimensions (mm)				Order No.
	W	L	H	i	
G 1/8	22	22	7	14	401-43
G 1/4	22	29	10	22	401-44



401-44

Screw-in distributor T

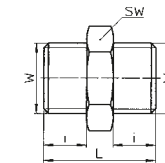
Thread	Dimensions (mm)				Order No.
	W	L	H	i	
G 1/8	22	22	8	17	401-45
G 1/4	29	29	10	22	401-46



401-46

Double nipple

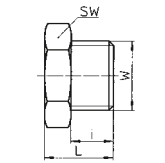
Thread	Dimensions (mm)				Order No.
	W	L	H	i	
G 1/8	19	-	7	17	185.029
G 1/4	22	-	8.5	21	185.033



185.033

Screw plug

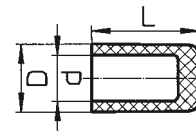
Thread	Dimensions (mm)				Order No.
	W	L	H	i	
G 1/8	11	-	6	14	401-47
G 1/4	13	-	8	17	401-48
G 3/8	14	-	8	19	401-55
G 1/2	16	-	10	24	401-56



401-48

Sealing cap Material PA11

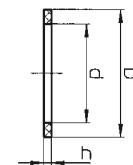
Hose-Ø D x d (mm)	Dimensions (mm)		Order No.
	L		
6 x 4	10		401-1
8 x 6	14		401-2
10 x 8	18		401-3



401-1

Sealing rings

Version	Thread	Dimensions (mm)			Order No.
		W	D	d	
Sealing ring, PVC	G 1/8	13.9	9.8	1.5	289-133
Sealing ring, PVC	G 1/4	16.5	13.2	1.5	269-97
Captive sealing ring, PA	G 1/8				320-35
Captive sealing ring, PA	G 1/4				308-124
Captive sealing ring, PA	G 3/8				308-125
Captive sealing ring, PA	G 1/2				320-37



269-97



308-124

Technical data

Max. operating pressure (p ₁)	40 bar (PN 40 bar)/580 psi
Operating temperature	-10 °C up to +90 °C
Mounting position/flow direction	any/any
Material	brass